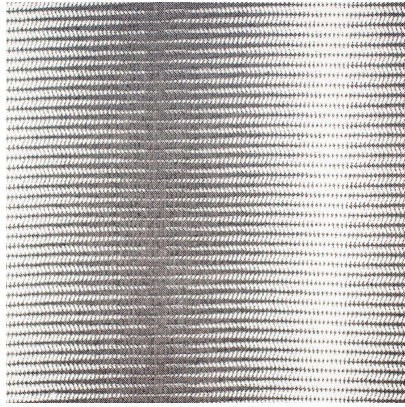


[102322](#)



## DETAILED SPECS

|                          |  |
|--------------------------|--|
| <b>Textile Type</b>      | Woven  |
| <b>Contents</b>          | 80% Polyester 20% Cotton (Experience Blend)                    |
| <b>Dimensions</b>        | 54 in  |
| <b>Abrasion</b>          | 60000+ DR  |
| <b>Flammability</b>      | CAL 117-2013 NFPA 260 Class 1 (NFPA 701 IMO and E84 available) |
| <b>Stain Protection</b>  | Copper Shield Available, Pro-Tech Included                     |
| <b>Horizontal Repeat</b> | 7"   |
| <b>Vertical Repeat</b>   | 0.25"  |
| <b>Backing</b>           | Available  |
| <b>End Use</b>           | Upholstery   |
| <b>MOQ</b>               | 300  |
| <b>Pattern Direction</b> | Up the Roll  |
| <b>Care Codes</b>        | WS   |





**Color Fastness**

4

---

