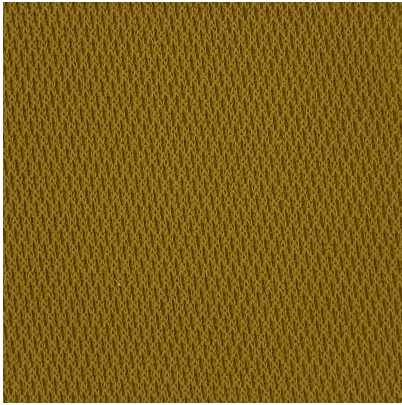




[109910](#)



DETAILED SPECS

| | |
|--------------------------|-------------------------------|
| Textile Type | Box Sock |
| Contents | 90% Polyester 10% Lycra |
| Dimensions | Made To Order |
| Abrasion | N/A |
| Flammability | CAL 117-2013 NFPA 260 Class 1 |
| Stain Protection | Washable |
| Backing | Not Applicable |
| End Use | Box Sock |
| MOQ | 300 |
| Pattern Direction | N/A |

