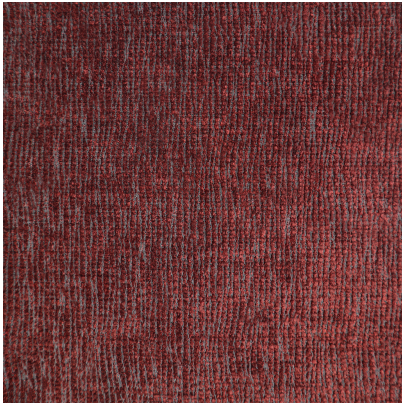


[100412](#)



**DETAILED SPECS**

|                          |  |
|--------------------------|--|
| <b>Textile Type</b>      | Woven  |
| <b>Contents</b>          | 80% Polyester 13% Acrylic 7% Viscose                           |
| <b>Dimensions</b>        | 54 in  |
| <b>Abrasion</b>          | 60000+ DR  |
| <b>Flammability</b>      | CAL 117-2013 NFPA 260 Class 1 (NFPA 701 IMO and E84 available) |
| <b>Stain Protection</b>  | Copper Shield Available, Pro-Tech Included                     |
| <b>Backing</b>           | Acrylic  |
| <b>End Use</b>           | Upholstery   |
| <b>MOQ</b>               | 50   |
| <b>Pattern Direction</b> | Up the Roll  |
| <b>Care Codes</b>        | WS   |
| <b>Color Fastness</b>    | 4  |

