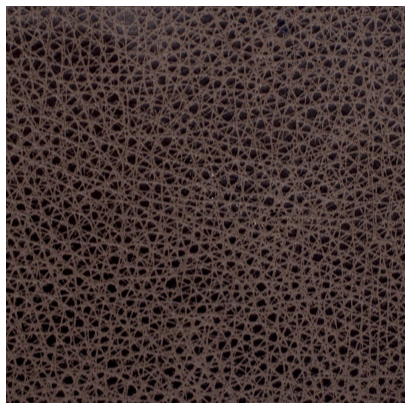




[102411](#)



## DETAILED SPECS

<b>Textile Type</b>	Leather
<b>Contents</b>	Semi-Aniline Leather
<b>Dimensions</b>	50 -55 SF Average
<b>Abrasion</b>	150000+ DR
<b>Flammability</b>	CAL 117-2013 NFPA 260 Class 1 IMO and E84 Inherent
<b>Stain Protection</b>	Inherent
<b>Backing</b>	Not Applicable
<b>End Use</b>	Upholstery
<b>Care Codes</b>	WS
<b>Color Fastness</b>	3

