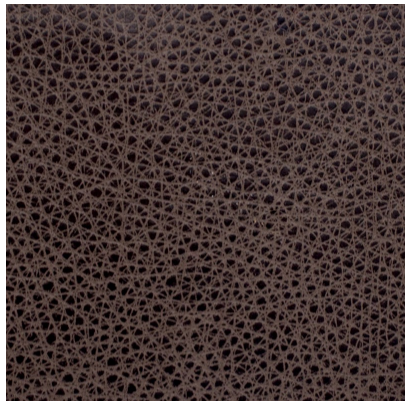


[102411](#)**DETAILED SPECS**

| | |
|-------------------------|----------------------------------------------------|
| Textile Type | Leather |
| Contents | Semi-Aniline Leather |
| Dimensions | 50 -55 SF Average |
| Abrasion | 150000+ DR |
| Flammability | CAL 117-2013 NFPA 260 Class 1 IMO and E84 Inherent |
| Stain Protection | Inherent |
| Backing | Not Applicable |
| End Use | Upholstery |
| Care Codes | WS |
| Color Fastness | 3 |

