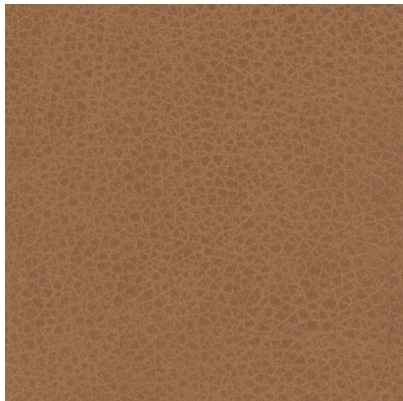


[110945](#)



DETAILED SPECS

Textile Type	Leather
Contents	Semi-Aniline Leather
Dimensions	50 -55 SF Average
Abrasion	150000+ DR
Flammability	CAL 117-2013 NFPA 260 Class 1 IMO and E84 Inherent
Stain Protection	Inherent
Horizontal Repeat	N/A
Vertical Repeat	N/A
Backing	Not Applicable
End Use	Upholstery
Care Codes	WS
Color Fastness	3

