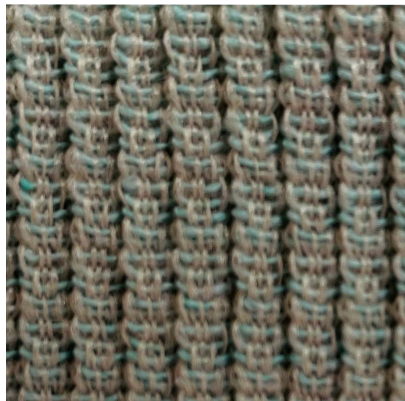


[110593](#)



## DETAILED SPECS

|                          |                               |
|--------------------------|-------------------------------|
| <b>Textile Type</b>      | Box Sock                      |
| <b>Contents</b>          | 90% Polyester 10% Lycra       |
| <b>Dimensions</b>        | Made To Order                 |
| <b>Flammability</b>      | CAL 117-2013 NFPA 260 Class 1 |
| <b>Stain Protection</b>  | Washable                      |
| <b>Backing</b>           | Not Applicable                |
| <b>End Use</b>           | Box Sock                      |
| <b>Pattern Direction</b> | N/A                           |
| <b>Care Codes</b>        | C                             |

