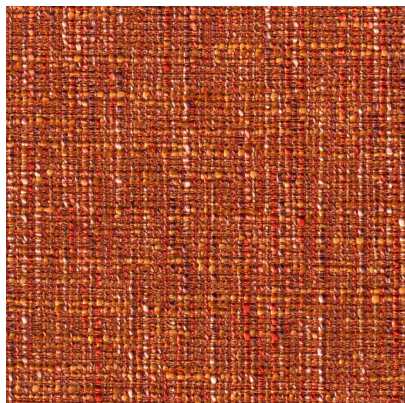


[100640](#)



## DETAILED SPECS

|                          |                                                                |
|--------------------------|----------------------------------------------------------------|
| <b>Textile Type</b>      | Woven                                                          |
| <b>Contents</b>          | 67% Polyester 33% Acrylic                                      |
| <b>Dimensions</b>        | 54 in                                                          |
| <b>Abrasion</b>          | 100000+ DR                                                     |
| <b>Flammability</b>      | CAL 117-2013 NFPA 260 Class 1 (NFPA 701 IMO and E84 available) |
| <b>Stain Protection</b>  | Copper Shield Available, Pro-Tech Included                     |
| <b>Backing</b>           | Acrylic                                                        |
| <b>End Use</b>           | Upholstery                                                     |
| <b>MOQ</b>               | 50                                                             |
| <b>Pattern Direction</b> | Up the Roll                                                    |
| <b>Care Codes</b>        | WS                                                             |
| <b>Color Fastness</b>    | 4                                                              |

