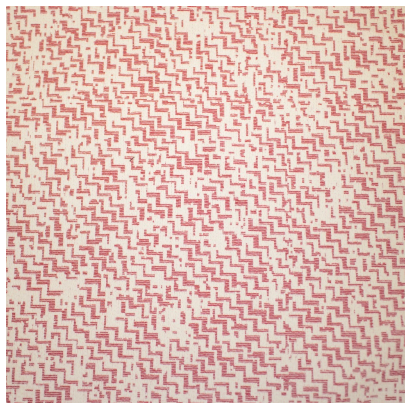


[103618](#)



DETAILED SPECS

| | |
|--------------------------|--|
| Textile Type | Woven |
| Contents | 80% Polyester 20% Cotton (Experience Blend) |
| Dimensions | 54 in |
| Abrasion | 60000+ DR |
| Flammability | CAL 117-2013 NFPA 260 Class 1 (NFPA 701 IMO and E84 available) |
| Stain Protection | Copper Shield Available, Pro-Tech Included |
| Horizontal Repeat | 12.09" |
| Vertical Repeat | 12.99" |
| Backing | Available |
| End Use | Upholstery |
| Pattern Direction | Up the Roll |
| Care Codes | WS |
| Color Fastness | 4 |

