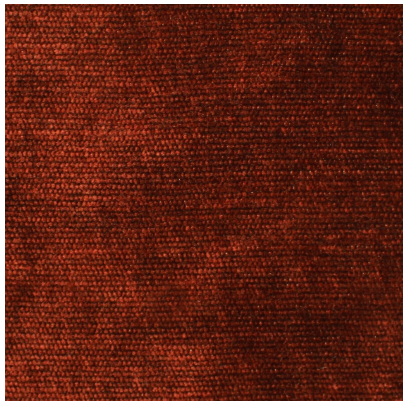


[100451](#)**DETAILED SPECS**

Textile Type	Velvet
Contents	79% Polyester 21% Acrylic
Dimensions	54 in
Abrasion	100000+ DR
Flammability	CAL 117-2013 NFPA 260 Class 1 (NFPA 701 IMO and E84 available)
Stain Protection	Copper Shield Available, Pro-Tech Included
Backing	Acrylic
End Use	Upholstery
MOQ	50
Pattern Direction	Up the Roll
Care Codes	WS
Color Fastness	4

