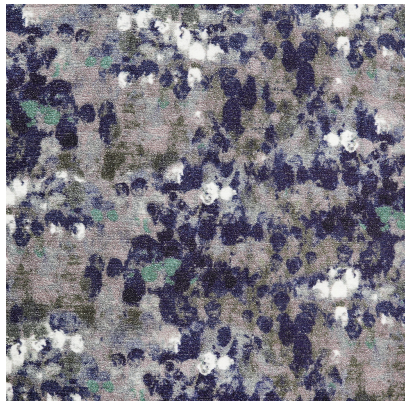


[108864](#)



## DETAILED SPECS

<b>Textile Type</b>	Prints
<b>Contents</b>	54% Polyester 37% Viscose 9% Cotton
<b>Dimensions</b>	54 in
<b>Abrasion</b>	60000+ DR
<b>Flammability</b>	CAL 117-2013 NFPA 260 Class 1 (NFPA 701 IMO and E84 available)
<b>Stain Protection</b>	Copper Shield Available, Pro-Tech Included
<b>Horizontal Repeat</b>	14"
<b>Vertical Repeat</b>	25.19"
<b>Backing</b>	Not Applicable
<b>End Use</b>	Upholstery
<b>Pattern Direction</b>	Up the Roll
<b>Care Codes</b>	WS
<b>Color Fastness</b>	4

