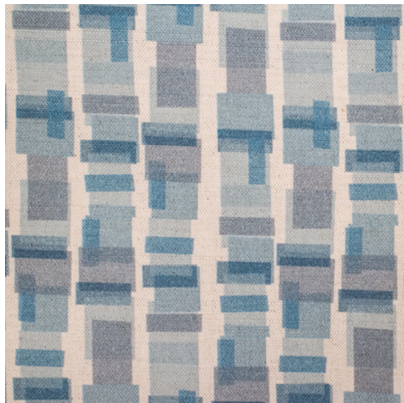


[109023](#)



DETAILED SPECS

| | |
|--------------------------|--|
| Textile Type | Prints |
| Contents | 70% Polyester 20% Viscose 10% Linen |
| Dimensions | 54 in |
| Abrasion | 60000+ DR |
| Flammability | CAL 117-2013 NFPA 260 Class 1 (NFPA 701 IMO and E84 available) |
| Stain Protection | Copper Shield Available, Pro-Tech Included |
| Horizontal Repeat | 4.25" |
| Vertical Repeat | 6.5" |
| Backing | Acrylic |
| End Use | Upholstery |
| MOQ | 50 |
| Pattern Direction | Up the Roll |
| Care Codes | WS |





Color Fastness

4

