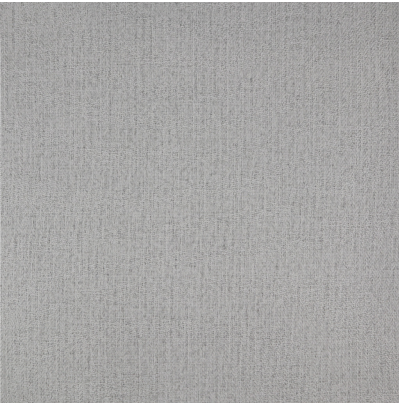


BLACKOUT WINSLOW (DOUBLE-FACED) - PEARL



Product Specification Sheet

[111405](#)



DETAILED SPECS

Textile Type	BlackOut
Contents	100% Polyester
Dimensions	118 in (Also available at 59 in)
Abrasion	N/A
Flammability	Passes IMO FTP Part 7 and NFPA 701
Stain Protection	Pro-Tech Available
Backing	Not Applicable
End Use	Drapery
Pattern Direction	Up the Roll
Color Fastness	4

