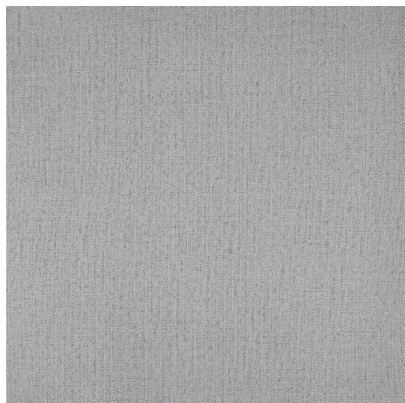


# BLACKOUT WINSLOW (DOUBLE-FACED) - PEARL



Product Specification Sheet

[111405](#)



## DETAILED SPECS

<b>Textile Type</b>	BlackOut
<b>Contents</b>	100% Polyester
<b>Dimensions</b>	118 in (Also available at 59 in)
<b>Abrasion</b>	N/A
<b>Flammability</b>	Passes IMO FTP Part 7 and NFPA 701
<b>Stain Protection</b>	Pro-Tech Available
<b>Backing</b>	Not Applicable
<b>End Use</b>	Drapery
<b>Pattern Direction</b>	Up the Roll
<b>Color Fastness</b>	4

