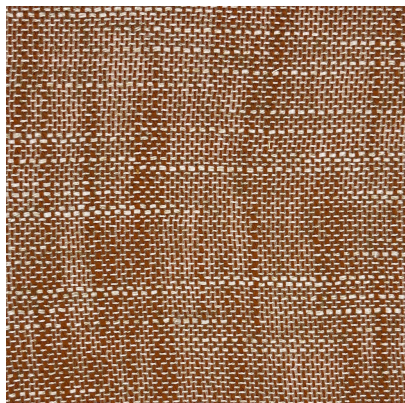


[110370](#)



DETAILED SPECS

| | |
|--------------------------|------------------------------------|
| Textile Type | Sheer |
| Contents | 100% Trevotex (inherent Polyester) |
| Dimensions | 118 in |
| Abrasion | N/A |
| Flammability | Passes IMO FTP Part 7 and NFPA 701 |
| Stain Protection | Pro-Tech Available |
| End Use | Sheer |
| MOQ | 50 |
| Pattern Direction | Railroad |
| Care Codes | S |
| Color Fastness | 4 |

