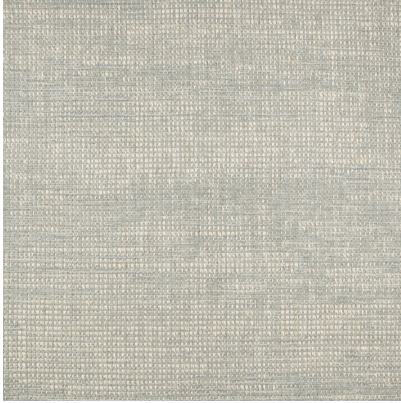


[110070](#)


## DETAILED SPECS

<b>Textile Type</b>	Woven
<b>Contents</b>	70% Polyester 15% Cotton 10% Viscose 5% Linen
<b>Dimensions</b>	54 in
<b>Abrasion</b>	60000+ DR
<b>Flammability</b>	CAL 117-2013 NFPA 260 Class 1 (NFPA 701 IMO and E84 available)
<b>Stain Protection</b>	Copper Shield Available, Pro-Tech Included
<b>Horizontal Repeat</b>	5.59"
<b>Vertical Repeat</b>	15.3"
<b>Backing</b>	Acrylic
<b>End Use</b>	Upholstery
<b>Pattern Direction</b>	Up the Roll
<b>Care Codes</b>	WS
<b>Color Fastness</b>	4

